

# EU DECLARATION OF CONFORMITY

Manufacturer:

CLYDESDALE LTD  
3 Sunbeam Rd  
Woburn Road Ind. Est.  
Kempston, Beds  
MK42 7BZ, UK



Garment batch numbers are recorded at Clydesdale Ltd for traceability.

We declare that the PPE described hereafter:

Clydesdale NOAH Arc Flash Protection Coveralls

NOAH Product Code	EN 61482-1-1, Arc Rating	EN 61482-1-2, Arc Class	Description
CLY 582 124 SSS	12.4 cal/cm <sup>2</sup> (ATPV)	1*	Coverall

*S" indicates garment sizing details.*

*Garments are available in any colour and with any corporate logo applied as long as it uses the type approved material.*

*\*Extended testing also completed at 5.5kA, 0.5s, 300mm*

*\*\*Extended testing also completed at 10kA, 0.5s, 300mm*

Is in conformity with the provisions of EU Regulation 2016/425 as demonstrated by conformance to the Essential Health and Safety Requirements set out and also with the following standards, specifications and test methods:

EN 61482-1-1:2009 (approved garment combinations shown in user manual)

EN 61482-1-2 :2007 (approved garment combinations shown in user manual)

IEC 61482-2:2009

EN ISO 11612 :2015 (garment specific code letters shown in user manual)

EN ISO 13688:2013

Is identical to the PPE which is the subject of EC certificate of conformity N° 523630/1 performed by the notified body BTTG, 0338 which is now held by:

Shirley®

Notified body 2895

Port Tunnel Business Park

Office 13, Unit 21

Dublin 17, ROI

Date of transition to Shirley: 10<sup>th</sup> June 2021

Is subject to the procedure set out in Module C2 of Regulation 2016/425 under the supervision of the notified body 2895,

Shirley®

Notified body 2895

Port Tunnel Business Park

Office 13, Unit 21

Dublin 17, ROI

Signed for and on behalf of:

Clydesdale Ltd

By David Sample

Managing Director

13<sup>th</sup> August 2021

# EU DECLARATION OF CONFORMITY

Manufacturer:

CLYDESDALE LTD  
3 Sunbeam Rd  
Woburn Road Ind. Est.  
Kempston, Beds  
MK42 7BZ, UK



Garment batch numbers are recorded at Clydesdale Ltd for traceability.  
We declare that the PPE described hereafter:  
Clydesdale NOAH Arc Flash Protection Anti-Static Coveralls

NOAH Product Code	EN 61482-1-1, Arc Rating	EN 61482-1-2, Arc Class	EN1149-2:2008	Description
CLY 582 125 SSS	12.5 cal/cm <sup>2</sup> (ATPV)	1*	Using EN 1149-3:2004	A/S Coverall

*S" indicates garment sizing details.*

*Garments are available in any colour and with any corporate logo applied as long as it uses the type approved material.*

*\*Extended testing also completed at 5.5kA, 0.5s, 300mm*

*\*\*Extended testing also completed at 10kA, 0.5s, 300mm*

Is in conformity with the provisions of EU Regulation 2016/425 as demonstrated by conformance to the Essential Health and Safety Requirements set out and also with the following standards, specifications and test methods:

EN 61482-1-1:2009 (approved garment combinations shown in user manual)

EN 61482-1-2 :2007 (approved garment combinations shown in user manual)

IEC 61482-2:2009

EN ISO 11612 :2015 (garment specific code letters shown in user manual)

EN ISO 13688:2013

Is identical to the PPE which is the subject of EC certificate of conformity N° 523630/1 performed by the notified body BTTG, 0338 which is now held by:

Shirley®

Notified body 2895

Port Tunnel Business Park

Office 13, Unit 21

Dublin 17, ROI

Date of transition to Shirley: 10<sup>th</sup> June 2021

Is subject to the procedure set out in Module C2 of Regulation 2016/425 under the supervision of the notified body 2895,

Shirley®

Notified body 2895

Port Tunnel Business Park

Office 13, Unit 21

Dublin 17, ROI

Signed for and on behalf of:

Clydesdale Ltd

By David Sample

Managing Director

13<sup>th</sup> August 2021

# EU DECLARATION OF CONFORMITY

Manufacturer:

CLYDESDALE LTD  
3 Sunbeam Rd  
Woburn Road Ind. Est.  
Kempston, Beds  
MK42 7BZ, UK



Garment batch numbers are recorded at Clydesdale Ltd for traceability.  
We declare that the PPE described hereafter:  
Clydesdale NOAH Arc Flash Protection Trousers

NOAH Product Code	EN 61482-1-1, Arc Rating	EN 61482-1-2, Arc Class	Description
CLY 583 124 SSS	12.4 cal/cm <sup>2</sup> (ATPV)	1*	Trousers

*S" indicates garment sizing details.*

*Garments are available in any colour and with any corporate logo applied as long as it uses the type approved material.*

*\*Extended testing also completed at 5.5kA, 0.5s, 300mm*

*\*\*Extended testing also completed at 10kA, 0.5s, 300mm*

Is in conformity with the provisions of EU Regulation 2016/425 as demonstrated by conformance to the Essential Health and Safety Requirements set out and also with the following standards, specifications and test methods:

EN 61482-1-1:2009 (approved garment combinations shown in user manual)  
EN 61482-1-2 :2007 (approved garment combinations shown in user manual)  
IEC 61482-2:2009  
EN ISO 11612 :2015 (garment specific code letters shown in user manual)  
EN ISO 13688:2013

Is identical to the PPE which is the subject of EC certificate of conformity N° 523630/1 performed by the notified body BTTG, 0338 which is now held by:

Shirley®  
Notified body 2895  
Port Tunnel Business Park  
Office 13, Unit 21  
Dublin 17, ROI  
Date of transition to Shirley: 10<sup>th</sup> June 2021

Is subject to the procedure set out in Module C2 of Regulation 2016/425 under the supervision of the notified body 2895,

Shirley®  
Notified body 2895  
Port Tunnel Business Park  
Office 13, Unit 21  
Dublin 17, ROI

Signed for and on behalf of:

Clydesdale Ltd  
By David Sample  
Managing Director  
13<sup>th</sup> August 2021



# EU DECLARATION OF CONFORMITY

Manufacturer:

CLYDESDALE LTD  
3 Sunbeam Rd  
Woburn Road Ind. Est.  
Kempston, Beds  
MK42 7BZ, UK



Garment batch numbers are recorded at Clydesdale Ltd for traceability.  
We declare that the PPE described hereafter:  
Clydesdale NOAH Arc Flash Protection Anti-static Trousers

NOAH Product Code	EN 61482-1-1, Arc Rating	EN 61482-1-2, Arc Class	EN1149-2:2008	Description
CLY 583 125 SSS	12.5 cal/cm <sup>2</sup> (ATPV)	1*	Using EN 1149-3:2004	A/S Trousers

*S" indicates garment sizing details.*

*Garments are available in any colour and with any corporate logo applied as long as it uses the type approved material.*

*\*Extended testing also completed at 5.5kA, 0.5s, 300mm*

*\*\*Extended testing also completed at 10kA, 0.5s, 300mm*

Is in conformity with the provisions of EU Regulation 2016/425 as demonstrated by conformance to the Essential Health and Safety Requirements set out and also with the following standards, specifications and test methods:

EN 61482-1-1:2009 (approved garment combinations shown in user manual)  
EN 61482-1-2 :2007 (approved garment combinations shown in user manual)  
IEC 61482-2:2009  
EN ISO 11612 :2015 (garment specific code letters shown in user manual)  
EN ISO 13688:2013

Is identical to the PPE which is the subject of EC certificate of conformity N° 523630/1 performed by the notified body BTTG, 0338 which is now held by:

Shirley®  
Notified body 2895  
Port Tunnel Business Park  
Office 13, Unit 21  
Dublin 17, ROI  
Date of transition to Shirley: 10<sup>th</sup> June 2021

Is subject to the procedure set out in Module C2 of Regulation 2016/425 under the supervision of the notified body 2895,

Shirley®  
Notified body 2895  
Port Tunnel Business Park  
Office 13, Unit 21  
Dublin 17, ROI

Signed for and on behalf of:

Clydesdale Ltd  
By David Sample  
Managing Director  
13<sup>th</sup> August 2021



# EU DECLARATION OF CONFORMITY

Manufacturer:

CLYDESDALE LTD  
3 Sunbeam Rd  
Woburn Road Ind. Est.  
Kempston, Beds  
MK42 7BZ, UK



Garment batch numbers are recorded at Clydesdale Ltd for traceability.

We declare that the PPE described hereafter:  
Clydesdale NOAH Arc Flash Protection Labcoat

NOAH Product Code	EN 61482-1-1, Arc Rating	EN 61482-1-2, Arc Class	Description
CLY 584 124 S	12.4 cal/cm <sup>2</sup> (ATPV)	1*	Labcoat

*S" indicates garment sizing details.*

*Garments are available in any colour and with any corporate logo applied as long as it uses the type approved material.*

*\*Extended testing also completed at 5.5kA, 0.5s, 300mm*

*\*\*Extended testing also completed at 10kA, 0.5s, 300mm*

Is in conformity with the provisions of EU Regulation 2016/425 as demonstrated by conformance to the Essential Health and Safety Requirements set out and also with the following standards, specifications and test methods:

EN 61482-1-1:2009 (approved garment combinations shown in user manual)

EN 61482-1-2 :2007 (approved garment combinations shown in user manual)

IEC 61482-2:2009

EN ISO 11612 :2015 (garment specific code letters shown in user manual)

EN ISO 13688:2013

Is identical to the PPE which is the subject of EC certificate of conformity N° 523630/1 performed by the notified body BTTG, 0338 which is now held by:

Shirley®

Notified body 2895

Port Tunnel Business Park

Office 13, Unit 21

Dublin 17, ROI

Date of transition to Shirley: 10<sup>th</sup> June 2021

Is subject to the procedure set out in Module C2 of Regulation 2016/425 under the supervision of the notified body 2895,

Shirley®

Notified body 2895

Port Tunnel Business Park

Office 13, Unit 21

Dublin 17, ROI

Signed for and on behalf of:

Clydesdale Ltd

By David Sample

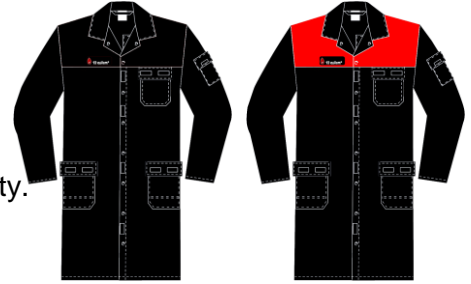
Managing Director

13<sup>th</sup> August 2021

# EU DECLARATION OF CONFORMITY

Manufacturer:

CLYDESDALE LTD  
3 Sunbeam Rd  
Woburn Road Ind. Est.  
Kempston, Beds  
MK42 7BZ, UK



Garment batch numbers are recorded at Clydesdale Ltd for traceability.  
We declare that the PPE described hereafter:  
Clydesdale NOAH Arc Flash Protection Anti-static Labcoat

NOAH Product Code	EN 61482-1-1, Arc Rating	EN 61482-1-2, Arc Class	EN1149-2:2008	Description
CLY 584 125 S	12.5 cal/cm <sup>2</sup> (ATPV)	1*	Using EN 1149-3:2004	A/S Labcoat

*S" indicates garment sizing details.*

*Garments are available in any colour and with any corporate logo applied as long as it uses the type approved material.*

*\*Extended testing also completed at 5.5kA, 0.5s, 300mm*

*\*\*Extended testing also completed at 10kA, 0.5s, 300mm*

Is in conformity with the provisions of EU Regulation 2016/425 as demonstrated by conformance to the Essential Health and Safety Requirements set out and also with the following standards, specifications and test methods:

EN 61482-1-1:2009 (approved garment combinations shown in user manual)  
EN 61482-1-2 :2007 (approved garment combinations shown in user manual)  
IEC 61482-2:2009  
EN ISO 11612 :2015 (garment specific code letters shown in user manual)  
EN ISO 13688:2013

Is identical to the PPE which is the subject of EC certificate of conformity N° 523630/1 performed by the notified body BTTG, 0338 which is now held by:

Shirley®  
Notified body 2895  
Port Tunnel Business Park  
Office 13, Unit 21  
Dublin 17, ROI  
Date of transition to Shirley: 10<sup>th</sup> June 2021

Is subject to the procedure set out in Module C2 of Regulation 2016/425 under the supervision of the notified body 2895,

Shirley®  
Notified body 2895  
Port Tunnel Business Park  
Office 13, Unit 21  
Dublin 17, ROI

Signed for and on behalf of:

Clydesdale Ltd  
By David Sample  
Managing Director  
13<sup>th</sup> August 2021



# EU DECLARATION OF CONFORMITY

Manufacturer:

CLYDESDALE LTD  
3 Sunbeam Rd  
Woburn Road Ind. Est.  
Kempston, Beds  
MK42 7BZ, UK



Garment batch numbers are recorded at Clydesdale Ltd for traceability.  
We declare that the PPE described hereafter:  
Clydesdale NOAH Arc Flash Protection Jackets

NOAH Product Code	EN 61482-1-1, Arc Rating	EN 61482-1-2, Arc Class	Description
CLY 585 124 S	12.4 cal/cm <sup>2</sup> (ATPV)	1*	Jacket

*S" indicates garment sizing details.*

*Garments are available in any colour and with any corporate logo applied as long as it uses the type approved material.*

*\*Extended testing also completed at 5.5kA, 0.5s, 300mm*

*\*\*Extended testing also completed at 10kA, 0.5s, 300mm*

Is in conformity with the provisions of EU Regulation 2016/425 as demonstrated by conformance to the Essential Health and Safety Requirements set out and also with the following standards, specifications and test methods:

EN 61482-1-1:2009 (approved garment combinations shown in user manual)

EN 61482-1-2 :2007 (approved garment combinations shown in user manual)

IEC 61482-2:2009

EN ISO 11612 :2015 (garment specific code letters shown in user manual)

EN ISO 13688:2013

Is identical to the PPE which is the subject of EC certificate of conformity N° 523630/1 performed by the notified body BTTG, 0338 which is now held by:

Shirley®

Notified body 2895

Port Tunnel Business Park

Office 13, Unit 21

Dublin 17, ROI

Date of transition to Shirley: 10<sup>th</sup> June 2021

Is subject to the procedure set out in Module C2 of Regulation 2016/425 under the supervision of the notified body 2895,

Shirley®

Notified body 2895

Port Tunnel Business Park

Office 13, Unit 21

Dublin 17, ROI

Signed for and on behalf of:

Clydesdale Ltd

By David Sample

Managing Director

13<sup>th</sup> August 2021

# EU DECLARATION OF CONFORMITY

Manufacturer:

CLYDESDALE LTD  
3 Sunbeam Rd  
Woburn Road Ind. Est.  
Kempston, Beds  
MK42 7BZ, UK



Garment batch numbers are recorded at Clydesdale Ltd for each

We declare that the PPE described hereafter:

Clydesdale NOAH Arc Flash Protection Anti-static Jackets

NOAH Product Code	EN 61482-1-1, Arc Rating	EN 61482-1-2, Arc Class	EN1149-2:2008	Description
CLY 585 125 S	12.5 cal/cm <sup>2</sup> (ATPV)	1*	Using EN 1149-3:2004	A/S Jacket

*S" indicates garment sizing details.*

*Garments are available in any colour and with any corporate logo applied as long as it uses the type approved material.*

*\*Extended testing also completed at 5.5kA, 0.5s, 300mm*

*\*\*Extended testing also completed at 10kA, 0.5s, 300mm*

Is in conformity with the provisions of EU Regulation 2016/425 as demonstrated by conformance to the Essential Health and Safety Requirements set out and also with the following standards, specifications and test methods:

EN 61482-1-1:2009 (approved garment combinations shown in user manual)

EN 61482-1-2 :2007 (approved garment combinations shown in user manual)

IEC 61482-2:2009

EN ISO 11612 :2015 (garment specific code letters shown in user manual)

EN ISO 13688:2013

Is identical to the PPE which is the subject of EC certificate of conformity N° 523630/1 performed by the notified body BTTG, 0338 which is now held by:

Shirley®

Notified body 2895

Port Tunnel Business Park

Office 13, Unit 21

Dublin 17, ROI

Date of transition to Shirley: 10<sup>th</sup> June 2021

Is subject to the procedure set out in Module C2 of Regulation 2016/425 under the supervision of the notified body 2895,

Shirley®

Notified body 2895

Port Tunnel Business Park

Office 13, Unit 21

Dublin 17, ROI

Signed for and on behalf of:

Clydesdale Ltd

By David Sample

Managing Director

13<sup>th</sup> August 2021

A handwritten signature in black ink, appearing to be 'D. Sample', is written over a faint circular stamp.



# EU DECLARATION OF CONFORMITY

Manufacturer:

CLYDESDALE LTD  
3 Sunbeam Rd  
Woburn Road Ind. Est.  
Kempston, Beds  
MK42 7BZ, UK



Garment batch numbers are recorded at Clydesdale Ltd for traceability  
We declare that the PPE described hereafter:  
Clydesdale NOAH Arc Flash Protection Long Sleeve Polo Shirt

NOAH Product Code	EN 61482-1-1, Arc Rating	EN 61482-1-2, Arc Class	Description
CLY 587 109 S	10.9 cal/cm <sup>2</sup> (ATPV)	1*	Polo shirt ("Rugby Shirt")

*S" indicates garment sizing details.*

*Garments are available in any colour and with any corporate logo applied as long as it uses the type approved material.*

*\*Extended testing also completed at 5.5kA, 0.5s, 300mm*

*\*\*Extended testing also completed at 10kA, 0.5s, 300mm*

Is in conformity with the provisions of EU Regulation 2016/425 as demonstrated by conformance to the Essential Health and Safety Requirements set out and also with the following standards, specifications and test methods:

EN 61482-1-1:2009 (approved garment combinations shown in user manual)

EN 61482-1-2 :2007 (approved garment combinations shown in user manual)

IEC 61482-2:2009

EN ISO 11612 :2015 (garment specific code letters shown in user manual)

EN ISO 13688:2013

Is identical to the PPE which is the subject of EC certificate of conformity N° 523630/1 performed by the notified body BTTG, 0338 which is now held by:

Shirley®

Notified body 2895

Port Tunnel Business Park

Office 13, Unit 21

Dublin 17, ROI

Date of transition to Shirley: 10<sup>th</sup> June 2021

Is subject to the procedure set out in Module C2 of Regulation 2016/425 under the supervision of the notified body 2895,

Shirley®

Notified body 2895

Port Tunnel Business Park

Office 13, Unit 21

Dublin 17, ROI

Signed for and on behalf of:

Clydesdale Ltd

By David Sample

Managing Director

13<sup>th</sup> August 2021

A handwritten signature in black ink, appearing to read 'David Sample', is written over a white background.

# EU DECLARATION OF CONFORMITY

Manufacturer:

CLYDESDALE LTD  
3 Sunbeam Rd  
Woburn Road Ind. Est.  
Kempston, Beds  
MK42 7BZ, UK



Garment batch numbers are recorded at Clydesdale Ltd for traceability.  
We declare that the PPE described hereafter:  
Clydesdale NOAH Arc Flash Protection Double Layer Labcoat

NOAH Product Code	EN 61482-1-1, Arc Rating	EN 61482-1-2, Arc Class	Description
CLY 584 392 S	39.2 cal/cm <sup>2</sup> (ATPV)	2*	Double Layer Labcoat

*S" indicates garment sizing details.*

*Garments are available in any colour and with any corporate logo applied as long as it uses the type approved material.*

*\*Extended testing also completed at 5.5kA, 0.5s, 300mm*

*\*\*Extended testing also completed at 10kA, 0.5s, 300mm*

Is in conformity with the provisions of EU Regulation 2016/425 as demonstrated by conformance to the Essential Health and Safety Requirements set out and also with the following standards, specifications and test methods:

EN 61482-1-1:2009 (approved garment combinations shown in user manual)

EN 61482-1-2 :2007 (approved garment combinations shown in user manual)

IEC 61482-2:2009

EN ISO 11612 :2015 (garment specific code letters shown in user manual)

EN ISO 13688:2013

Is identical to the PPE which is the subject of EC certificate of conformity N° 523630/1 performed by the notified body BTTG, 0338 which is now held by:

Shirley®

Notified body 2895

Port Tunnel Business Park

Office 13, Unit 21

Dublin 17, ROI

Date of transition to Shirley: 10<sup>th</sup> June 2021

Is subject to the procedure set out in Module C2 of Regulation 2016/425 under the supervision of the notified body 2895,

Shirley®

Notified body 2895

Port Tunnel Business Park

Office 13, Unit 21

Dublin 17, ROI

Signed for and on behalf of:

Clydesdale Ltd

By David Sample

Managing Director

13<sup>th</sup> August 2021

# EU DECLARATION OF CONFORMITY

Manufacturer:

CLYDESDALE LTD  
3 Sunbeam Rd  
Woburn Road Ind. Est.  
Kempston, Beds  
MK42 7BZ, UK



Garment batch numbers are recorded at Clydesdale Ltd for traceability.  
We declare that the PPE described hereafter:  
Clydesdale NOAH Arc Flash Protection Winter Fleece

NOAH Product Code	EN 61482-1-1, Arc Rating	EN 61482-1-2, Arc Class	Description
CLY 586 179 S	17.9 cal/cm <sup>2</sup> (ATPV)	2*	Winter Fleece

*S" indicates garment sizing details.*

*Garments are available in any colour and with any corporate logo applied as long as it uses the type approved material.*

*\*Extended testing also completed at 5.5kA, 0.5s, 300mm*

*\*\*Extended testing also completed at 10kA, 0.5s, 300mm*

Is in conformity with the provisions of EU Regulation 2016/425 as demonstrated by conformance to the Essential Health and Safety Requirements set out and also with the following standards, specifications and test methods:

EN 61482-1-1:2009 (approved garment combinations shown in user manual)

EN 61482-1-2 :2007 (approved garment combinations shown in user manual)

IEC 61482-2:2009

EN ISO 11612 :2015 (garment specific code letters shown in user manual)

EN ISO 13688:2013

Is identical to the PPE which is the subject of EC certificate of conformity N° 523630/1 performed by the notified body BTTG, 0338 which is now held by:

Shirley®

Notified body 2895

Port Tunnel Business Park

Office 13, Unit 21

Dublin 17, ROI

Date of transition to Shirley: 10<sup>th</sup> June 2021

Is subject to the procedure set out in Module C2 of Regulation 2016/425 under the supervision of the notified body 2895,

Shirley®

Notified body 2895

Port Tunnel Business Park

Office 13, Unit 21

Dublin 17, ROI

Signed for and on behalf of:

Clydesdale Ltd

By David Sample

Managing Director

13<sup>th</sup> August 2021



# EU DECLARATION OF CONFORMITY

Manufacturer:

CLYDESDALE LTD  
3 Sunbeam Rd  
Woburn Road Ind. Est.  
Kempston, Beds  
MK42 7BZ, UK



Garment batch numbers are recorded at Clydesdale Ltd for traceability.  
We declare that the PPE described hereafter:  
Clydesdale NOAH Arc Flash Protection Balaclava

NOAH Product Code	Fabric Testing EN 61482-1-1	Fabric, EN 61482-1-2, Arc Class	Description
CLY 581 121 S	12.1 cal/cm <sup>2</sup> (ATPV)	1*	Balaclava

*S" indicates garment sizing details.*

*Garments are available in any colour and with any corporate logo applied as long as it uses the type approved material.*

*\*Extended testing also completed at 5.5kA, 0.5s, 300mm*

*\*\*Extended testing also completed at 10kA, 0.5s, 300mm*

Is in conformity with the provisions of EU Regulation 2016/425 as demonstrated by conformance to the Essential Health and Safety Requirements set out and also with the following standards, specifications and test methods:

~~IEC 61482-2:2005~~

EN ISO 11612 :2015 (garment specific code letters shown in user manual)

EN ISO 13688:2013

Is identical to the PPE which is the subject of EC certificate of conformity N° 523630/1 performed by the notified body BTTG, 0338 which is now held by:

Shirley®

Notified body 2895

Port Tunnel Business Park

Office 13, Unit 21

Dublin 17, ROI

Date of transition to Shirley: 10<sup>th</sup> June 2021

Is subject to the procedure set out in Module C2 of Regulation 2016/425 under the supervision of the notified body 2895,

Shirley®

Notified body 2895

Port Tunnel Business Park

Office 13, Unit 21

Dublin 17, ROI

Signed for and on behalf of:

Clydesdale Ltd

By David Sample

Managing Director

13<sup>th</sup> August 2021