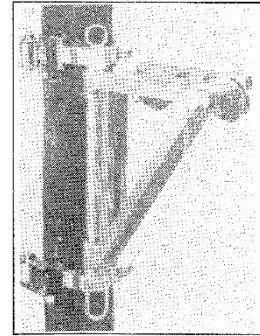
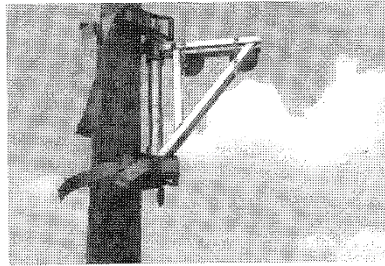
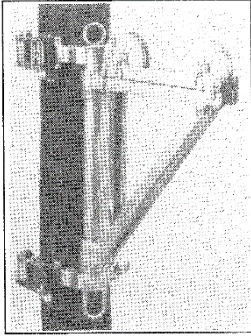


CLYDESDALE

Powering the Future

DATASHEET: CLY 1022

Transformer Lifting Gin

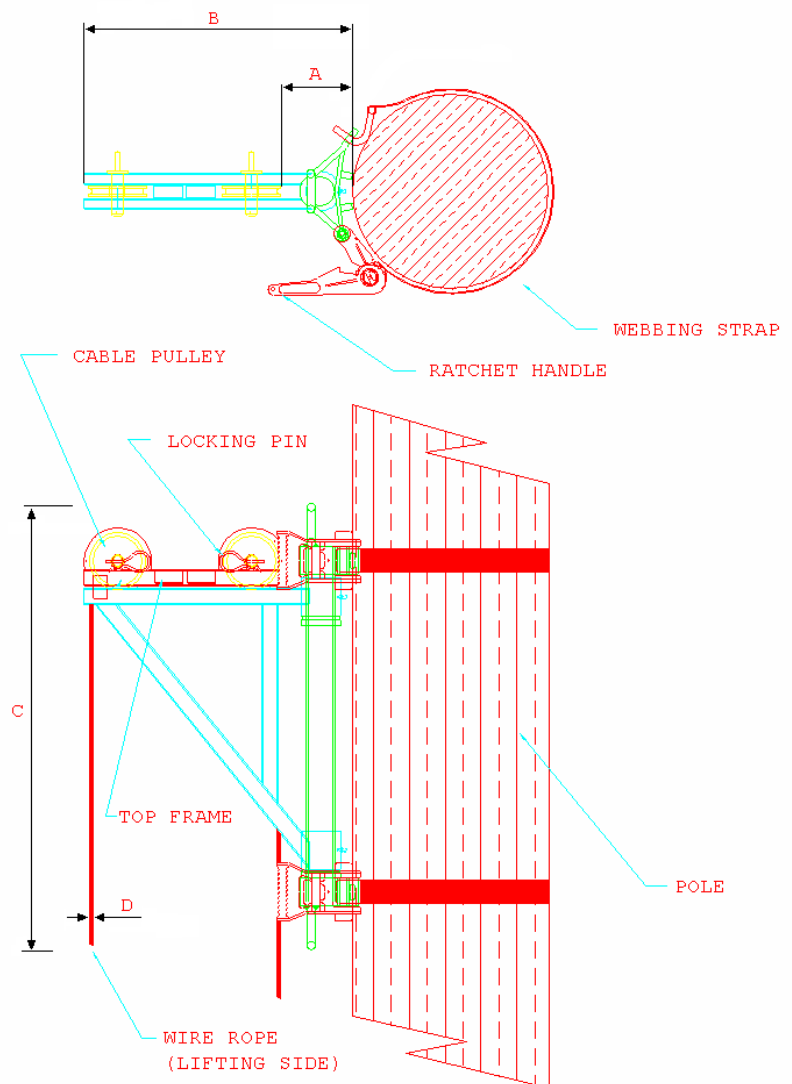


Top and bottom welded attachment rings make it easy to hoist the Lifting Gin to working height. The quick release nylon webbing straps are then ratchet tightened to secure the unit.

The top section is hinged to allow the wire lifting rope to pass through and over 2 lifting pulleys, the rope is then locked in place with the locking pins and chains.

The transformer is then hoisted to the required height, and as the bearing arm rotates through 180° the transformer can be lowered exactly into place. The nylon rollers reduce tractive effort.

The frame is made from box section quality steel, fully galvanised after manufacture, Ideally, this unit should be used in conjunction with a vehicle mounted winch.



Safe Working Load		1000kg
Weight		17.5kg
Pulley Offset	A	120mm
Overall Height	B	628mm
Overall Width	C	460mm
Max Wire Rope Diam.	D	12mm